

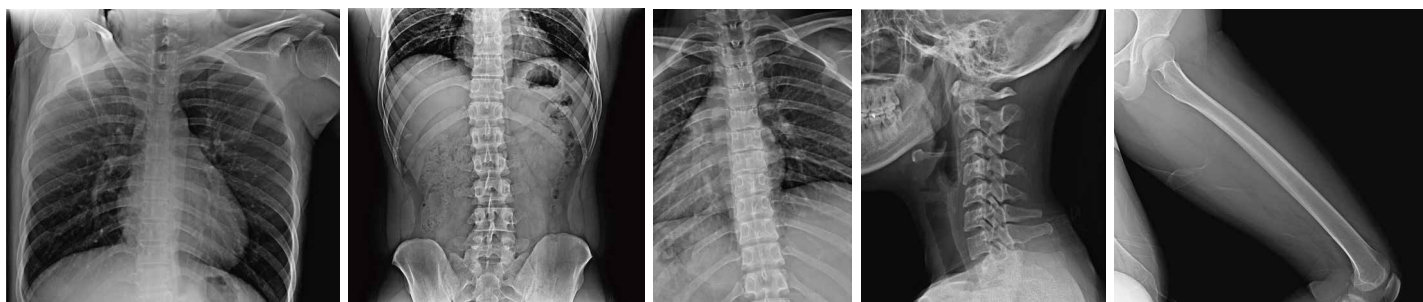
LG Digital X-ray Detector



17HK700G-W
17HK701G-W | 14HK701G-W

Superior Image Quality for Diagnostic Confidence

Highly Sensitive Csl AED* Detector with 16bit AD Conversion (Data Input & Output) *Auto Exposure Detection



Light yet Durable

IP41: Water Resistance & Dustproof



Solids Level 4
Protected against objects of
size 1mm or larger






Liquids Level 1
Protected against dripping liquids,
such as blood and bodily fluids

Magnesium & Carbon-fiber Body



With a super strong body that combines carbon-fiber with magnesium, The LG DXD is not only lightweight, but also exceptionally strong.

Product Weight

17HK700G-W	17HK701G-W Including Battery	14HK701G-W Including Battery
 3.2kg (7lb)	 3.4kg (7.5lb)	 2.95kg (6.5lb)

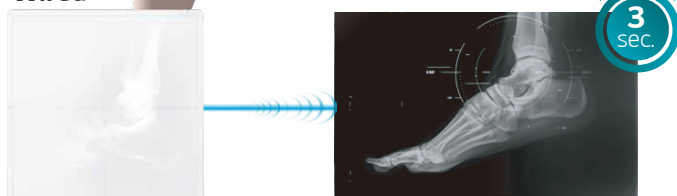
Maximum Load Weight

17HK700G-W & 17HK701G-W 14HK701G-W
 Uniform load 150kg (331lb) Point load 100kg (220lb)

Rapid Image Availability Increases Productivity

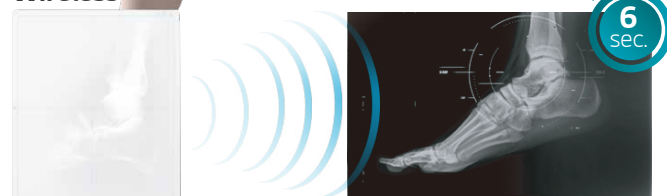
3sec. (Wired)/ 6sec. (Wireless, 802.11 ac)

Wired



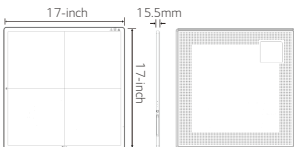
(17HK700G-W, 17HK701G-W, 14HK701G-W)

Wireless



(17HK701G-W, 14HK701G-W)

Specification

Model Name		17HK700G-W (Wired)	17HK701G-W (Wired / Wireless)	14HK701G-W (Wired / Wireless)
External Dimension / Weight		17 x 17 inch 	17 x 17 inch 	14 x 17 inch 
		3.2kg, 7lb	3.4kg, 7.5lb (lcl. Battery)	2.95kg, 6.5lb (lcl. Battery)
Intended Use		General Radiography		
TFT Type		A-si		
Scintillator		CsI		
Pixel Size		140 μ m		
Image Area	X-ray Sensitive Pixel	3072 x 3072 pixels	3072 x 3072 pixels	2500 x 3052 pixels
	X-ray Sensitive Area	430.08 x 430.08 mm	430.08 x 430.08 mm	350 x 427.28 mm
MTF	MTF @ 0.5lp/mm	(Typ.) 89%		
DQE	DQE @ 0.1lp/mm	(Typ.) 72%		
A/D Conversion		16bit		
Data Output		16bit		
Communication	Type	Wired	Wired / Wireless	Wired / Wireless
	Wireless	-	IEEE802.11a/b/g/n/ac, 2.4GHz / 5GHz	IEEE802.11a/b/g/n/ac, 2.4GHz / 5GHz
	AED (Auto Exposure Detection)	Support		
Cycle Time		8sec.	8sec. (Wired) / 11sec. (Wireless)	8sec. (Wired) / 11sec. (Wireless)
Full Image		3sec.	3sec. (Wired) / 6sec. (Wireless)	3sec. (Wired) / 6sec. (Wireless)
Durability	Maximum Load Weight	Full (Uniform Load) : 150kg, 331lb Local (Point Load) : 100kg, 220lb		
	Resistance Rating	IP41		
	Sensor Protection Plate	Carbon Fiber Plate		
Battery	Operating Time	-	(Typ.) 240 shots / 6.0hrs. (Condition : Interval Time 90sec.)	(Typ.) 240 shots / 6.0hrs. (Condition : Interval Time 90sec.)
	Duration in Standby Status	-	(Typ.) 13hrs.	(Typ.) 13hrs.
	Charging Time	-	3hrs.	3hrs.

LG Electronics Inc.

<http://www.lge.com>

Copyright © 2018 LG Electronics. All Rights Reserved.